

CASEMENTS (A) LTD

COMPANY PROFILE

ADDRESS

Plot 86/90, 5th Street. Industrial Area, Kampala
P.O Box 4641, Kampala, Uganda

EMAIL

gm@casements.co.ug

WEBSITE

www.casements.co.ug

TELEPHONE

+256 414 233577

MOBILE

+256 752 700700



About Us

Established in 1965, Casements (Africa) Limited has been a pioneer in the fabrication and construction industry, delivering superior solutions in aluminium, glass, steel and wood products. Headquartered in Kampala, Uganda, we bring over five decades of unmatched expertise, innovation and craftsmanship to every project.

As an **ISO 9001:2008** certified company, we uphold global standards of quality and precision.

Guided by Environmental, Social, and Governance (ESG) principles, our operations prioritize sustainability, safety, and social responsibility, ensuring that our products and services positively impact the environment and communities we serve.



Our Factory: The Heart of Precision

Casements (Africa) Limited, a proud member of the Alam Group, is strategically located on Plot 86/90, 5th Street Industrial Area, sitting on 1.813 hectares of prime industrial land. Our expansive facility is purpose-built to house advanced technology and experienced craftsmanship, ensuring we meet the highest standards in the industry.

Facilities Overview

Office Block —A modern, three-level office block spanning 1,350m², designed to foster collaboration and efficiency.



Our production units are categorized into specialized departments:

Glass Division:

1,183m² dedicated to cutting-edge glass solutions.



Aluminium Division:

1,354m² equipped with advanced fabrication technology.



Steel Division:

A sprawling 3,134m² area ensures robust, high-quality steel products.



Powder Coating:

557m² designed for precision surface finishes.



Aluminium Stores:

1,700m² for streamlined storage and logistics.



Wood Division:

1,100m² for streamlined storage and logistics.



Supplementary Facilities

Our factory is supported by essential amenities that ensure a seamless operation:

Clinic: On-site healthcare for employee well-being.



Parking and Loading Areas:

Optimized for efficient movement of goods.



Kitchen, Dining, and Canteen: A comfortable space for our team to recharge.



Our state-of-the-art machines and experienced technicians, combined with a supportive work environment, guarantee precision, high accuracy, smart delivery, and exceptional quality across all our products.



Our Product Portfolio

At Casements (Africa) Limited, we don't just provide products—we build partnerships. We understand that your space is more than walls and floors; it reflects your aspirations, lifestyle, and identity. That's why we pour our passion and expertise into every project, ensuring that what we create together is as unique and meaningful as you are.

Why do you need our products? Because they do more than serve a purpose; they bring your dreams to life. Whether it's a window that frames your favourite view, a door that welcomes loved ones, or a ceiling that makes a bold statement, our products are crafted to enhance your space and enrich your life.



Why we are invested in you.

We are passionate about what we do because we care about your vision, needs, and the story you want to tell through your space. Our process is a collaboration, a journey we take together:

- **We Listen to You:** Your space is yours, and no one knows it better than you. That's why we start by understanding your ideas, preferences, and the emotions you want your space to evoke.
- **We Plan With You in Mind:** Every detail is important, and our experts carefully plan each project to reflect your vision while ensuring practicality, functionality, and timeless elegance.

- **We Source What's Best for You:** We believe you deserve nothing less than the best. That's why we meticulously select materials that guarantee durability, sustainability, and style.
- **We Fabricate With Care:** Your trust in us inspires us to deliver perfection. Using cutting-edge technology and skilled craftsmanship, we transform raw materials into products that exceed expectations.
- **We Install for You:** From our hands to your home, we make sure every product is installed seamlessly, leaving you with a space that's not only beautiful but also built to last.



Our relationship with you doesn't end at the transaction—it begins there. We are here to bring your vision to life, to ensure every detail feels just right, and to create spaces you will love for years to come.

So, whether it's a home, an office, or a commercial building, let's work together to craft something extraordinary. At Casements (Africa) Limited, it's not just about the products—it's about you.

Our Product Portfolio

Aluminium

We recognize the challenges posed by counterfeit and low-quality aluminium flooding the Ugandan market. These substandard products not only compromise the safety and durability of your projects but also fail to deliver the aesthetic and functional excellence you deserve. That's why we take a stand against mediocrity by offering **aluminium solutions crafted from premium aluminium profiles.**

Our products are sourced with precision and care, ensuring they meet and exceed industry standards for **strength, durability, and style.** When you choose Casements Africa, you are investing in materials that offer:

- **Guaranteed Authenticity:** Every aluminium profile we use is certified to be genuine and of the highest quality.
- **Unmatched Durability:** Engineered to withstand harsh weather, corrosion, and wear, ensuring your investment lasts a lifetime.
- **Elegant Aesthetics:** Our designs seamlessly combine form and function, delivering modern, sleek looks for every space.



Here's a comprehensive look at what we offer:

Windows

Sliding Windows

- **Design:** Seamlessly designed for smooth operation and space-saving installation.
- **Tracks:**
 - **2-Track Sliding Windows:** Designed for installations without mosquito nets, offering a sleek, minimalist look.
 - **3-Track Sliding Windows:** Engineered to accommodate integrated mosquito nets for enhanced ventilation and insect protection.
- **Performance:** Features advanced gliding mechanisms with durable rollers for long-lasting performance and silent operation.
- **Applications:** Ideal for both residential and commercial spaces, offering a balance of functionality and aesthetic appeal.



Side Hung Windows

- **Fabrication:** Crafted with precision-engineered hinges and airtight seals to provide maximum noise reduction, water resistance, and thermal insulation.
- **Operation:** Opens outward or inward for convenient cleaning and efficient ventilation.
- **Applications:** Commonly used in areas requiring enhanced weatherproofing and controlled airflow, such as bedrooms and offices.



Projected Windows

- **Design:** Outward-opening windows supported by friction stays for ease of operation and controlled ventilation.
- **Material:** Made from robust aluminium profiles, ensuring long-lasting performance even in high-moisture environments.
- **Applications:** Perfect for kitchens, bathrooms, and commercial spaces requiring effective airflow management.



Circular, Bay, and Bow Windows

- **Circular Windows:** Crafted for unique architectural statements, offering a combination of functionality and aesthetics.
- **Bay and Bow Windows:** Engineered to extend outward, creating additional interior space while maximizing natural light and panoramic views.
- **Customization:** Available in various sizes and finishes to match specific design preferences.



Louvered Windows

- **Features:** Adjustable blades provide excellent airflow control and privacy without compromising on design.
- **Material Options:** Available with glass, aluminium, or composite blades to suit different needs.
- **Applications:** Ideal for areas needing continuous ventilation, such as utility rooms and corridors.



Composite Windows

- **Fabrication:** Combines aluminium with wood, UPVC, or other materials for enhanced strength, thermal performance, and aesthetics.
- **Features:** Advanced insulation properties, soundproofing, and resistance to wear and tear.
- **Applications:** Suitable for premium residential and commercial projects.



Doors

Sliding Doors

- **Design:** Space-saving doors with smooth sliding tracks for effortless operation.
- **Tracks:** Available in 2-track, 3-track, and multi-track configurations to accommodate different panel and net requirements.
- **Security:** Reinforced locks and high-quality rollers ensure durability and safety.
- **Applications:** Ideal for patio entrances, balconies, and office partitions.



Bifold Doors

- **Features:** Panels neatly fold away to maximize open space, creating a seamless indoor-outdoor experience.
- **Tracks:** High-grade aluminium tracks with durable hinges for smooth operation and longevity.
- **Applications:** Perfect for restaurants, large residential spaces, and conference rooms.



Pivot Doors

- **Design:** Statement doors with a centre or offset pivot mechanism for unique functionality and style.
- **Construction:** Robust aluminium frames support large glass or composite panels, ensuring structural integrity and smooth operation.
- **Applications:** Commonly used as grand entrances for modern residential or commercial spaces.



Other Aluminium Products

Trellidors

- **Design:** Retractable steel or aluminium doors offer maximum security with modern aesthetics.
- **Features:** Customizable finishes and sizes, anti-corrosion treatment, and robust locking mechanisms.
- **Applications:** Ideal for securing patios, windows, and commercial storefronts.



Aluminium Composite Panels (ACP) for Cladding

- **Features:** Lightweight, durable panels with excellent weather resistance and thermal insulation.
- **Finishes:** Available in a variety of colours and textures, including metallic, matte, and woodgrain finishes.
- **Applications:** Widely used for modern building façades, signage, and interior wall panelling.



Aluminium Railing Systems

- **Types:**
 - **Glass and Aluminium Railings:** Sleek designs combining safety with transparency.
 - **Honey Polished Railings:** Aesthetic finishes for luxurious interiors.
- **Applications:** Perfect for staircases, balconies, and terraces.



Glass

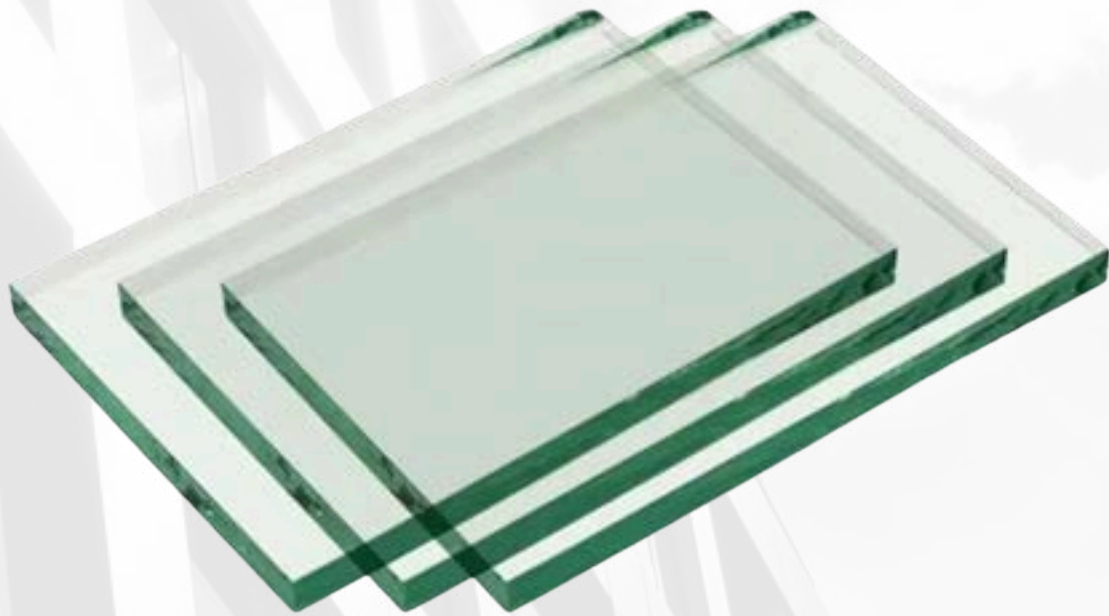
We believe glass is not just a building material—it's a canvas for creating functional, stylish, and energy-efficient spaces. Whether you choose clear glass for its clarity and seamless integration or tinted glass for added privacy, sun control, and aesthetic flair, we offer a wide range of glass solutions tailored to meet the specific needs of your residential or commercial project.

Our glass products are designed to enhance your space in more ways than one. From energy-saving solar control to boosting the visual appeal of your property, we offer a variety of options that deliver both form and function. Let's explore how both clear and tinted glass can transform your environment and bring your vision to life.



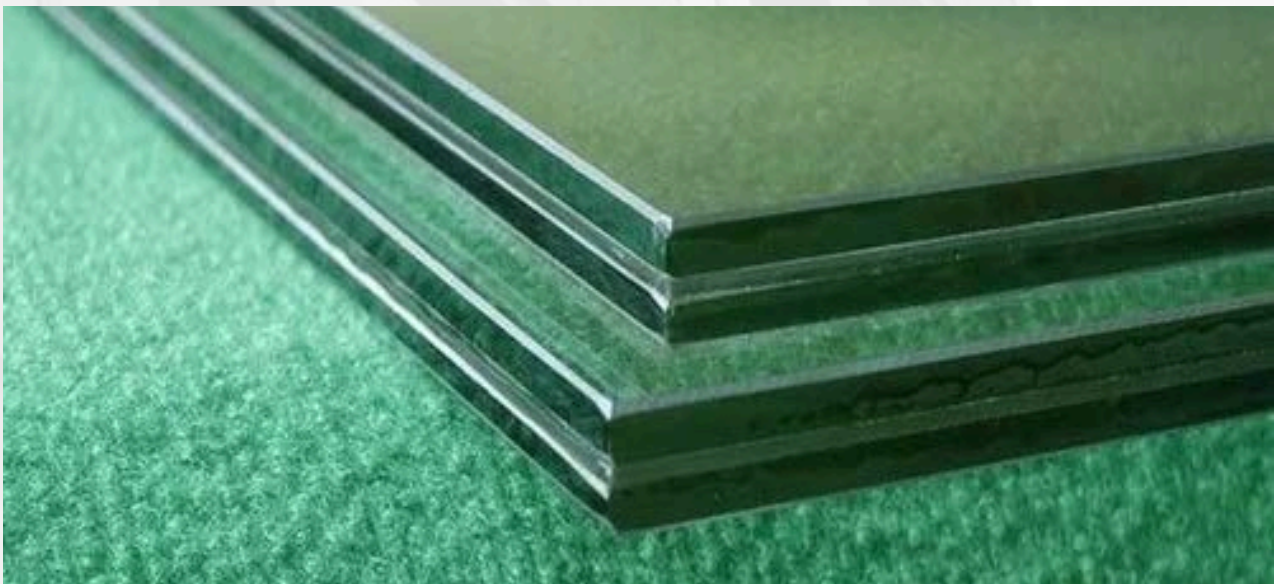
Float Glass/ Clear Glass

- **Thickness:** Available in **2mm, 3mm, 4mm, 5mm, 6mm, 8mm and 10mm**, ensuring suitability for various applications.
- **Key Characteristics:**
 - **Smooth, Flat Surface:** Manufactured using the float process, giving it a high degree of uniformity and smoothness, perfect for clear, high-visibility applications.
 - **High Optical Clarity:** Ideal for applications where transparency is paramount, such as windows, facades, and mirrors.
 - **Versatile and Economical:** A reliable solution for general applications at an affordable price.
- **Applications:** Residential windows and doors, Commercial storefronts, Display cases and shelving, Mirrors and glass furniture



Laminated Glass

- **Thickness:** Available in **8.38mm, 10.38mm and 12.38mm**, (Multi-layered)
- **Key Characteristics:**
 - **Shatter-Resistant:** Composed of two or more layers of glass with an interlayer of polymer, providing enhanced safety by preventing shattering.
 - **Improved Sound Insulation:** The interlayer also reduces sound transmission, making it ideal for high-traffic areas or noisy environments.
 - **UV Protection:** Reduces harmful UV rays, protecting interior furnishings from fading.
- **Applications:** High-security areas (e.g., banks, government buildings), Windows and doors in high-impact zones, Skylights and glass roofs and Soundproof applications (offices, homes)



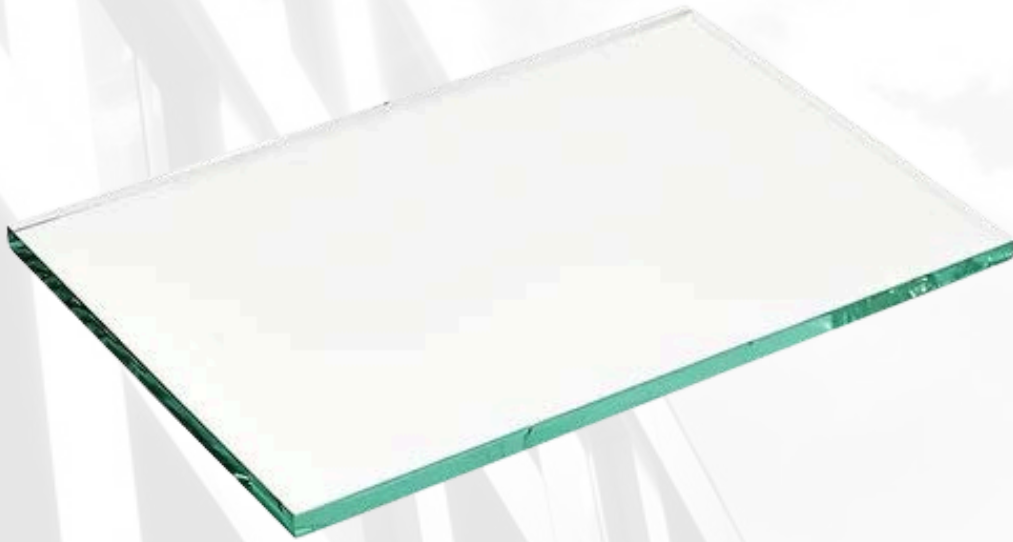
Reflective Glass

- **Thickness:** Available in **4mm, 5mm, 6mm and 8mm**
- **Key Characteristics:**
 - **Solar Control:** Reflective coatings help reduce solar heat gain, making them ideal for energy-efficient building designs.
 - **Aesthetic Appeal:** The reflective surface creates a sleek, modern look and enhances privacy by reducing visibility from the outside.
 - **Enhanced Durability:** High-quality reflective coatings that are resistant to fading, discolouration, and staining over time.
- **Applications:** Commercial facades, Office buildings and hotels, Privacy glass for residential spaces, Curtain wall systems



Toughened /Tempered Glass

- **Thickness:** Available in **6mm, 8mm, 10mm and 12mm**
- **Key Characteristics:**
 - **Strengthened for Safety:** Heat-treated to make it five times stronger than regular float glass, making it resistant to thermal shock and impact.
 - **Breakage Pattern:** When broken, tempered glass crumbles into small, less dangerous fragments, ensuring safety.
 - **Increased Durability:** Resistant to scratches and wear, making it suitable for high-use areas.
- **Applications:** Shower screens and bathroom enclosures, Balustrades and railings, Glass facades, Glass doors and partitions.



Frosted Glass

- **Thickness:** Available in **4mm, 5mm, 6mm and 8mm**
- **Key Characteristics:**
 - **Privacy Without Sacrificing Light:** Translucent glass that allows light to pass through but obscures visibility, perfect for spaces that require both privacy and natural light.
 - **Durable Finish:** Unlike inferior frosted glass, our products maintain their texture and clarity without fading or scratching.
 - **Aesthetic Customization:** Available in a variety of finishes, including matte and satin.
- **Applications:** Bathroom windows and partitions, Office partitions, Decorative features and Door panels.



Sandblasted Glass

- **Thickness:** Available in **4mm, 5mm, 6mm and 8mm**
- **Key Characteristics:**
 - **Unique Texture:** Created using sandblasting techniques, this glass is perfect for creating decorative patterns, logos, and artistic features.
 - **Enhanced Privacy:** Offers both aesthetic value and functionality, particularly in spaces requiring added privacy.
 - **Customizable Patterns:** Available in both standard and custom designs, ensuring a bespoke look for your project.
- **Applications:** Custom signage and logos, Artistic interior designs, Office partitions, Decorative facades



Glass Blocks

- **Thickness:** Available in **115mm to 300mm**
- **Key Characteristics:**
 - **Light Diffusion:** Provides privacy while allowing natural light to penetrate.
 - **Durability:** Highly durable and resistant to cracking, making it an excellent choice for walls that need both strength and light transmission.
 - **Insulation:** Offers excellent thermal and acoustic insulation properties.
- **Applications:** Decorative walls, Privacy walls in bathrooms and basements, Commercial or residential windows with privacy needs



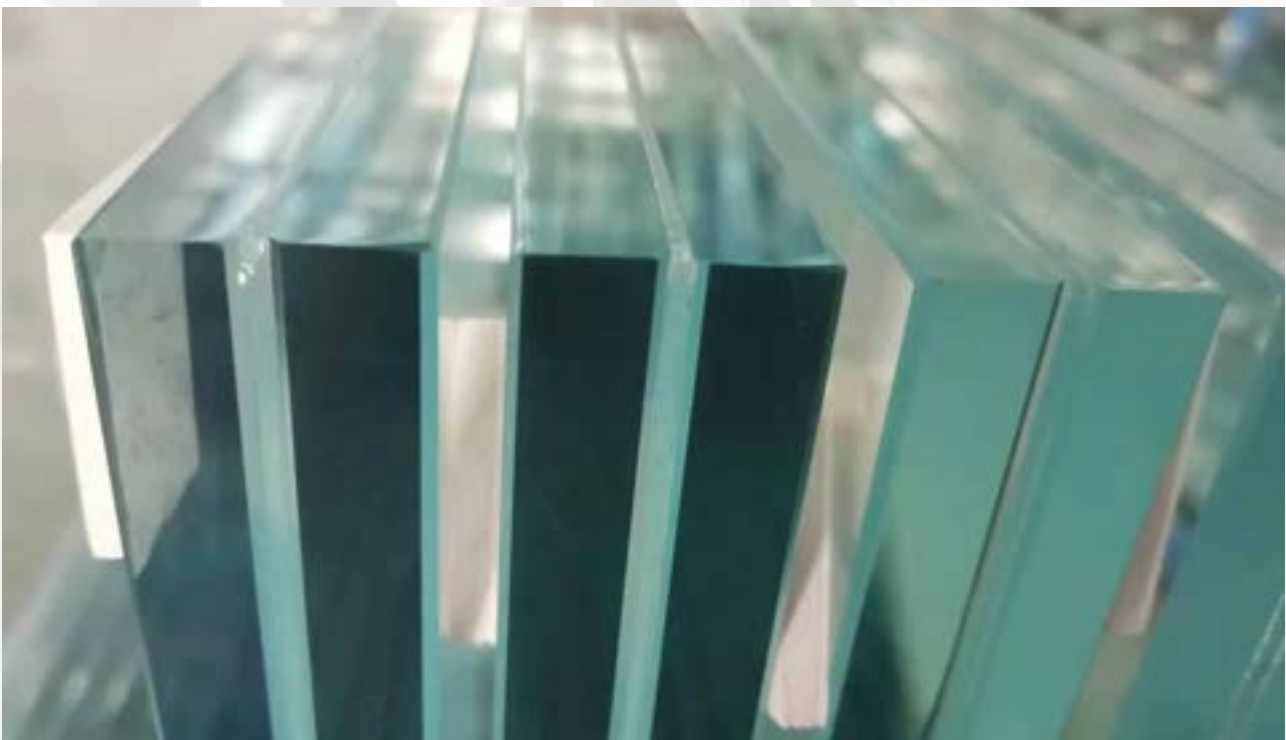
Bulletproof Glass

- **Thickness:** Available in **19mm to 38mm**, (Custom based on threat level)
- **Key Characteristics:**
 - **Multi-layered Construction:** Comprised of layers of glass and polymer interlayers, providing exceptional resistance to impacts and bullets.
 - **Clear Visibility:** Unlike some alternatives, our bulletproof glass maintains high optical clarity without distortion.
 - **Security Without Compromise:** Provides maximum protection without compromising on aesthetics.
- **Applications:** Banks and financial institutions, Government buildings and embassies, High-security areas such as airports or museums



Acoustic Glass

- **Thickness:** Available in **10mm to 12mm** (Laminated)
- **Key Characteristics:**
 - **Soundproofing:** Incorporates interlayers that absorb sound, providing significant noise reduction.
 - **Enhanced Privacy:** Perfect for spaces requiring quiet environments, such as conference rooms or bedrooms.
 - **Durability:** Long-lasting and resistant to delamination.
- **Applications:** Soundproof windows and doors, Music studios and home theatres, Commercial offices and hotels.



Decorative Blocks

- **Thickness:** Available in **4mm to 10mm** (Custom options available)
- **Key Characteristics:**
 - **Custom Designs:** Available in a range of patterns, colours, and textures to suit any style.
 - **High Precision:** Crafted using advanced etching, sandblasting, and tinting techniques to create striking designs.
 - **Longevity:** High-quality finishes that retain their beauty over time without fading or deteriorating.
- **Applications:** Feature walls and partitions, Custom doors and windows, Display cases and cabinet fronts.



Tinted Glass Options: *Enhancing Privacy, Comfort, and Aesthetic Appeal*

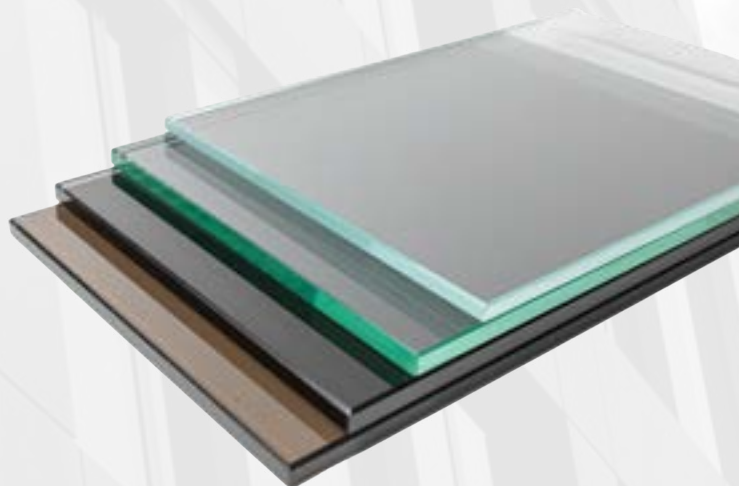
We offer a variety of tinted glass options to enhance both the functionality and aesthetics of your spaces. Tinted glass not only provides privacy but also contributes to solar control, glare reduction, and improved energy efficiency.

Common Tints In Stock:

Bronze, Gray, Blue, Black and Green

Applications:

Residential windows for added privacy, Commercial branding and architectural facades, Offices and high-rise buildings, Retail store windows for visual merchandising and branding



Curtain Wall Systems

Our Curtain Wall Systems combine premium glass with durable aluminium frames for a sleek, airtight, and weather-resistant solution. Engineered to prevent air and water infiltration, they enhance energy efficiency and structural integrity while offering a modern, elegant aesthetic.

Available in various glass thicknesses (8.38mm, 10.38mm, 12.38mm), our systems are customized to suit your design needs and ensure long-lasting performance.



Steel

Comprehensive Steel Solutions – Built to Last

Our steel product portfolio is designed to meet the evolving needs of modern architecture, offering unmatched strength, security, and style. From industrial-grade solutions to elegant residential designs, our steel products showcase the best in material quality and craftsmanship.

Steel Doors

Robust and elegant solutions for residential, commercial, and industrial properties.

- **Types:**
 - **Side Hung Doors:** Built for durability with reinforced hinges and lock systems.
 - **Sliding Steel Doors:** Space-saving designs with precision tracks for effortless operation.
 - **Burglar-Proof Doors:** Featuring advanced security locks, steel reinforcements, and tamper-proof frames.



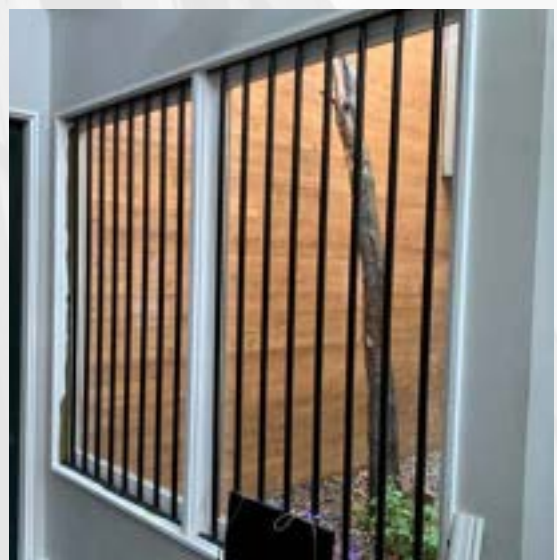
Features:

- High-grade steel construction for maximum impact resistance.
- Powder-coated or galvanized finishes for rust and weather resistance.
- Fire-rated and acoustic options available.

Steel Windows

Offering security, ventilation, and durability in a variety of styles.

- **Types:**
 - **Fixed Windows:** Non-operational designs for enhanced security and light entry.
 - **Sliding Steel Windows:** Smooth operation with durable tracks.
 - **Side Hung Steel Windows:** Functional and stylish with strong locking mechanisms.
 - **Burglar-Proof Windows:** Integrated steel bars for added security.



Features:

- Precision-engineered frames for airtight sealing.
- Powder-coated or painted finishes for a sleek appearance.
- Customizable designs and sizes to fit any architectural need.

Steel Mini Homes

Roller Shutters

- Secure and versatile options for commercial and residential garages, storefronts, and warehouses.
- **Features:**
 - Heavy-duty steel slats with galvanized or powder-coated finishes.
 - Motorized and manual operation systems.
 - High resistance to impact and tampering.
 - Fire Resistant



Collapsible Grilles

Practical solutions for securing windows, doors, and commercial spaces.

- **Features:**
 - Smooth sliding mechanisms for ease of use.
 - Galvanized steel for rust resistance.
 - Space-efficient folding design when not in use.



Steel Structures

Ideal for warehouses, factories, workshops, and large-scale buildings.

- **Features:**

- Engineered for high load-bearing capacity and structural stability.
- Prefabricated components for fast and efficient installation.
- Corrosion-resistant finishes to withstand harsh environmental conditions.
- Customizable layouts to meet client specifications.



Container Houses

Innovative solutions for portable and modular living or workspace units.

- **Features:**

- Durable steel frames that are weatherproof and resistant to wear.
- Insulated panels for temperature regulation and energy efficiency.
- Fully customizable interiors with options for plumbing, electrical, and ventilation systems.
- Quick assembly and disassembly for mobile applications.



Shading Systems

Our shading systems are designed to provide optimal comfort and energy efficiency for your space. Whether for residential, commercial, or industrial applications, our solutions deliver both style and functionality.

Key Features

- **Temperature Control:** Reduces heat gain, keeping your interiors cooler and minimizing energy consumption.
- **UV Protection:** Protects furniture and interiors from harmful UV rays.
- **Customizable Designs:** Choose from a variety of colours, materials, and styles to suit your specific needs.
- **Durable Construction:** Built with high-quality materials that withstand harsh weather conditions, ensuring longevity.

Our shading systems aren't just functional—they are an investment in comfort, sustainability, and enhanced aesthetics for your property.



Storage Racks

We provide heavy-duty storage racks tailored to meet your organizational needs. From warehouses to retail stores and even residential spaces, our racks combine strength, efficiency, and versatility.

Why Choose Our Storage Racks?

- **High Load Capacity:** Built to support heavy loads, ensuring secure storage of your goods.
- **Customizable Configurations:** Adjustable shelves to accommodate items of varying sizes.
- **Premium Material:** Constructed from robust steel and finished with anti-corrosion powder coating for durability.
- **Space Optimization:** Designed to maximize storage capacity while minimizing floor space usage.

Whether you are storing inventory, tools, or personal items, our racks are engineered to make organization effortless and secure.



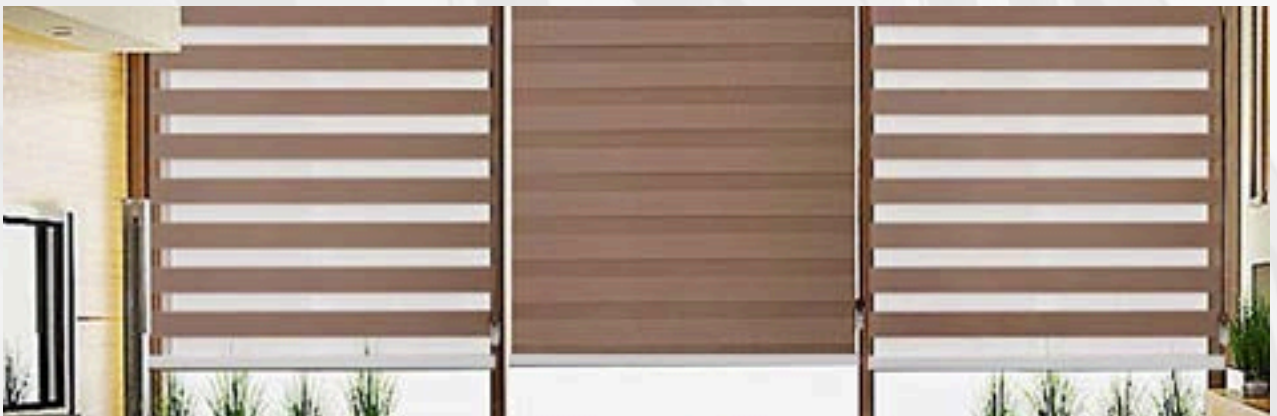
Vertical Blinds

Our vertical blinds offer a perfect balance of privacy, light control, and elegance for homes and offices. These blinds are designed to add a modern touch to any space while being highly functional.

Standout Features

- **Precision Light Control:** Adjust the angle of the blinds to control the amount of light entering your space.
- **Durable Materials:** Made from high-quality fabric, ensuring resistance to fading and wear.
- **Easy Maintenance:** Simple to clean and maintain, making them a practical choice for busy environments.
- **Wide Selection:** Available in various colours, textures, and finishes to complement any interior décor.
- **Child-Safe Mechanisms:** Designed with safety features, making them suitable for homes with children.

Whether for a professional setting or a cozy home, our vertical blinds offer a stylish, functional solution for your window covering needs.



Uniports

Modular and cost-effective housing solutions. Available in Circular, Oval and Pyramid.

- **Features:**

- Durable steel frames with lightweight galvanized panels.
- Customizable interiors for residential or commercial use.
- Designed for quick installation and easy relocation.



Wood

At Casements (Africa) Limited, we combine artistry with precision to create wood products that elevate your spaces. Each product is crafted using high-quality hardwood or high-density MDF, ensuring durability and exceptional design. Our offerings cater to both aesthetic and functional needs, delivering solutions that stand the test of time in both residential and commercial spaces.

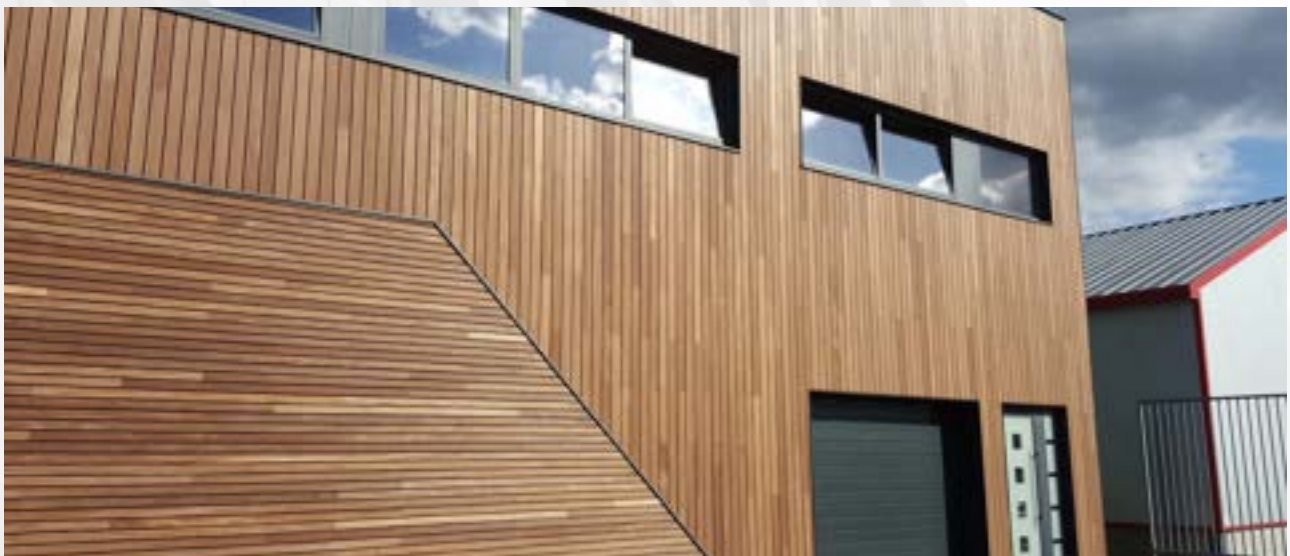
TV Units

- **Hardwood:** Elegant and durable, these units bring natural warmth and sophistication to your living room.
- **MDF:** Lightweight and customizable, perfect for sleek, modern interiors on a budget.



Wood Facades

- **Hardwood:** Weather-resistant and stunning, ideal for lasting beauty and protection.
- **MDF:** Flexible and stylish, great for contemporary designs with a variety of textures and finishes.



Doors

- **Solid Wood:** Secure, long-lasting, and full of character—a perfect blend of strength and beauty.
- **MDF:** Sleek and cost-effective, with finishes that elevate any modern space.



Windows

- **Hardwood:** Classic and durable, built to endure harsh weather while adding elegance.
- **MDF:** Low-maintenance and stylish, offering excellent insulation for contemporary spaces.



Wardrobes / Closet

- **Hardwood:** Durable, moisture-resistant, and visually striking—ideal for creating long-lasting storage solutions.
- **MDF:** Lightweight and customizable with smooth finishes, perfect for compact or modern spaces.



Cabinetry (Kitchen & Bathroom)

- **Hardwood Cabinets:** Beautifully crafted, providing a premium touch to kitchens and bathrooms while offering durability.
- **MDF Cabinets:** Budget-friendly and available in various colors and textures to suit any design style.



Partitions

- **Hardwood Partitions:** Stylish dividers with natural appeal, adding character and privacy to your spaces.
- **MDF Partitions:** Lightweight and customizable, perfect for modern open-plan homes or offices.



Flooring

- **Hardwood Flooring:** Luxurious and durable, ideal for high-traffic areas while adding value to your home.



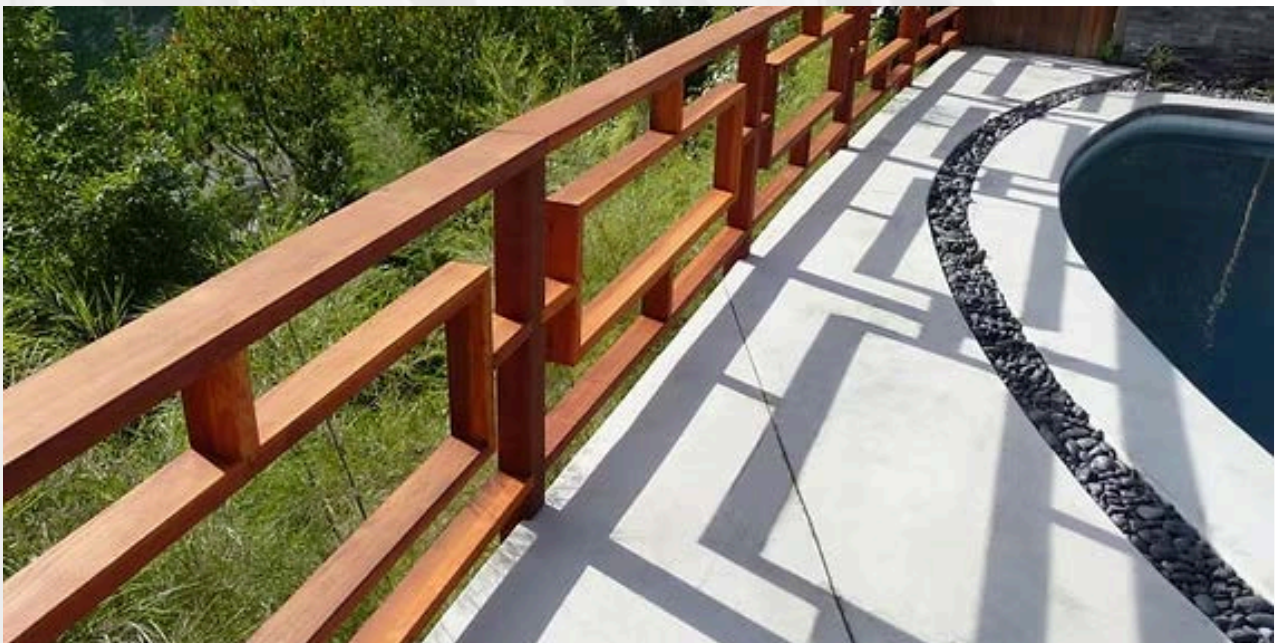
Ceiling Panels

- **Wooden Panels:** Enhance acoustics and ambiance with beautifully designed ceiling panels that suit both classic and modern interiors.



Railings

- **Hardwood Railings:** Combine safety with sophistication—ideal for staircases, balconies, and terraces.
- **MDF Railings:** A modern, cost-effective alternative offering versatile design options.



Ceilings

We believe ceilings are more than just a roof over your head—they are a canvas for design, functionality, and innovation. Whether you're looking to create a luxurious ambiance, improve acoustics, or enhance thermal insulation, our range of ceiling solutions offers something for every space.

Gypsum Ceilings

Gypsum ceilings are a versatile and cost-effective solution for modern interiors. They are lightweight and offer a smooth, seamless finish, making them ideal for various applications.

- **Features:**

- Customizable designs, from simple flat ceilings to intricate patterns and layered effects.
- Fire-resistant, durable and easy to maintain.
- Compatible with integrated lighting and HVAC systems.

- **Best For:**

Living rooms, offices, retail spaces and conference rooms.



Acoustic Ceilings

Perfect for spaces where sound quality is paramount, acoustic ceilings reduce noise levels and improve audio clarity.

- **Features:**

- High-performance sound absorption materials to minimize echoes.

- Available in a range of materials, including wood, gypsum, and fabric-wrapped panels.
- Enhances room comfort and privacy.

Best For:

- Home theatres, lecture halls, recording studios and office boardrooms.



Suspended / False Ceilings

Suspended ceilings are an excellent choice for concealing wiring, ductwork, or pipes while maintaining an elegant look.

- **Features:**

- Lightweight panels in various materials, including gypsum, mineral fibre and metal.
- Easy access for maintenance and repairs.
- Fire-resistant and energy-efficient, offering additional insulation.

- **Best For:**

Offices, commercial spaces and modern homes.



Powder Coating

At Casements Africa Limited, our powder coating services are designed to offer durability, style, and long-term value. We create a protective barrier that prevents rust, corrosion, and weather damage, ensuring your products, like aluminium windows and steel gates, remain strong for years.

Our powder coating provides a flawless finish with a variety of colors and textures to match your style or brand, while also being low-maintenance and cost-effective.



We offer a range of customizable options, including matte, glossy, and textured finishes. Our eco-friendly process is free from harmful VOCs, making it a sustainable choice. We coat aluminium profiles, steel products, decorative items, and outdoor structures, providing an attractive, weather-resistant finish.

Worried about peeling or fading?

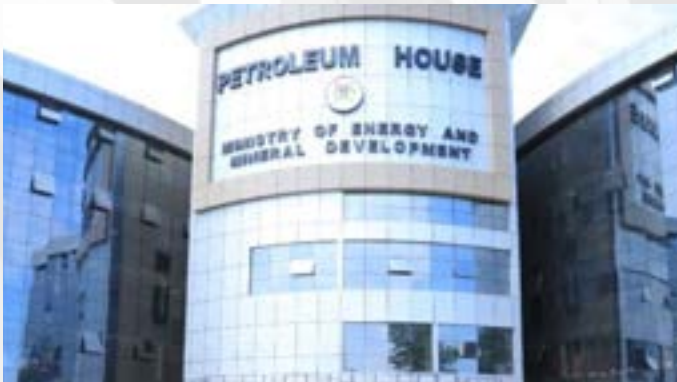
Our advanced process ensures strong adhesion, and we use only premium-grade materials for a superior, long-lasting finish. At Casements, we deliver quality and reliability, offering tailored solutions that meet your specific needs.

Projects

We are proud of our longstanding reputation for delivering exceptional construction and remodelling services. Our expertise spans a wide array of commercial projects, from office buildings and shopping centres to health facilities and residential estates. With a commitment to quality and precision, we have successfully completed numerous projects that enhance the structural integrity, aesthetics, and functionality of our client's properties. Below, we highlight some of our ongoing and completed commercial projects, reflecting our dedication to excellence in every endeavour.

ONGOING PROJECTS

Petroleum House, Ministry of Energy and Mineral Development



Scope of Work:

- Exterior Remodelling
- Aluminium Windows & Doors
- Curtain Walling
- ACP Cladding

Mbuya Military Hospital



Scope of Work:

- Aluminium Windows & Doors
- Curtain Walling
- ACP Cladding

Imperial Resort Beach Hotel – Entebbe



Scope of Work:

- ACP Cladding Reinstallation

SOME OF THE COMPLETED COMMERCIAL PROJECTS

- Course View Towers
- Crested Towers
- Tata Showroom, Kampala
- Office of the Auditor General
- Royal Palms Housing Estate, Butabika
- MTK Building, Kampala
- Prime Plaza, Kampala
- MANTRAC Head Offices, Kampala
- JR Complex, Kampala
- GEMS Cambridge International School, Kampala
- Lugogo Lifestyle Apartments
- DTB Centre, Kampala
- BMK House, Kampala
- Centre of Disease Control, Entebbe
- Uganda Virus Research Institute, Rakai
- DFID, British Embassy Complex
- Gulf Stream Housing Project
- Krishna Construction - Jamal Ramji
- Royal Palm Project, Butabika
- Greenland Towers
- N.W. & S.C. - Jinja
- Makerere University (Renovation)
- Toyota (U) Ltd
- UDB Towers
- Celtel House
- Allied Bank (Renovation)
- Crane Bank Towers
- Transroad's Commercial Plaza
- C.M.C. Showroom - Nakawa
- Bank of Uganda (Mbarara)
- MTN Switching Centre (Portbell Road)
- Tropical Africa Bank (Renovation)
- N.I.C Towers (Renovation)
- Shell, Caltex & Total Petrol Station (Renovation)
- Simbamanyo Building
- Bank of Uganda (Gulu)
- Pan Africa Commodities - Kawempe
- Century Bottling Co. Namanwe
- Nakawa House - Ntinda
- Queen's Chamber - Parliament Avenue
- Speke Resort - Munyonyo
- Pan Africa Commodities - Kawempe
- Century Bottling Co. Namanwe
- Nakawa House - Ntinda
- Queen's Chamber - Parliament Avenue
- Speke Resort - Munyonyo
- IPS Building - Parliament Avenue
- Golf Course Holding/Garden City
- Diamond Trust Building (Renovation)
- World Health Organization - Hannington Road
- Crested Towers
- Uganda Development Bank
- Uganda Golf Club - Extension
- Civil Aviation Authority, Entebbe
- UMA Conference Hall, Lugogo
- Wildlife Authority, Kira Road
- The Voice Mall
- Uganda Police Uniports

SOME OF THE COMPLETED COMMERCIAL PROJECTS

The Voice Mall- Bwebajja



Scope of Work:

- Aluminium Windows & Doors
- Curtain Walling
- ACP Cladding

Completion Year: 2022

Uganda Police Uniports - Northern Uganda and Central Uganda (1,300 Uniports)



Scope of Work:

- Fabrication and Installation of 1,300 Oval Uniports with partitions

Completion Year: 2022

SOME OF THE COMPLETED COMMERCIAL PROJECTS

Roze Court Apartments- Kololo



Scope of Work:

- Aluminium Windows & Doors
- Glass Railings
- Curtain Wall

Completion Year: 2017

Speke Resort- Munyonyo



Scope of Work:

- Aluminium Windows & Doors

Completion Year: 2002

SOME OF THE COMPLETED COMMERCIAL PROJECTS

Gems Cambridge International School- Butabika, Kampala



Scope of Work:

- Aluminium Windows & Doors
- Frameless Doors
- Partitions
- Steel Railing

Completion Year: 2014

Toyota (U) Limited- Namanve



Scope of Work:

- Steel Windows & Doors
- Steel Louvers
- Water Channel Gratings
- Dock Levellers

Completion Year: 2016

SOME OF THE COMPLETED COMMERCIAL PROJECTS

York Terrace- Kololo



Scope of Work:

- Aluminium Windows & Doors

Completion Year: 2016

Office Building at Plot 1, Hill Road- Kololo



Scope of Work:

- Aluminium Windows & Doors
- Frameless Doors
- Partitions
- Skylights

Completion Year: 2008

SOME OF THE COMPLETED COMMERCIAL PROJECTS

TATA Showroom- Lugogo bypass, Kampala



Scope of Work:

- Aluminium Windows & Doors
- ACP
- Spider Glazing
- Partitions
- Skylights
- Sun shading

Completion Year: 2012

Proposed Showroom - Old Port Bell Road, Kampala



Scope of Work:

- Aluminium Windows & Doors
- ACP
- Curtain Wall

Completion Year: 2012

SOME OF THE COMPLETED COMMERCIAL PROJECTS

MANTRAC Head Offices- 7th Street, Industrial Area, Kampala



Scope of Work:

- Aluminium Windows & Doors
- ACP
- curtain Wall
-

Completion Year: 2004

Muganzirwaza Mall - Katwe, Kampala



Scope of Work:

- Aluminium Windows & Doors
- Curtain Wall

Completion Year: 2012

SOME OF THE COMPLETED COMMERCIAL PROJECTS

MTK Building- Nasser Road, Kampala



Scope of Work:

- ACP Cladding
- Curtain Wall

Completion Year: 2016

Course View Tower – Yusuf Lule Road, Kampala



Scope of Work:

- ACP Cladding
- Aluminium Fins
- Shop-Fronts
- Sky Light
- Frameless Partitioning with Doors
- Entrance Canopy
- Automatic Doors
- Shading System.

Completion Year: 2010

SOME OF THE COMPLETED COMMERCIAL PROJECTS

Crested Tower Building- Kintu Road, Kampala



Scope of Work:

- Aluminum Doors & Windows
- Curtain Wall
- ACP Cladding
- Sun Shade

Completion Year: 2003

Office Of The Auditor General – Nakasero, Kampala



Scope of Work:

- Aluminium Windows & Doors
- Aluminium Partitioning
- Suspended Ceiling
- Curtain Wall
- Automatic Electric Door

Completion Year: 2014

SOME OF THE COMPLETED COMMERCIAL PROJECTS

BMK House- Wampewo Avenue, Kampala



Scope of Work:

- Aluminium Windows & Doors
- Curtain Wall
- ACP Cladding
- Stainless Steel Railing
- Partitioning
- Steel Structure

Completion Year: 2017

Royal Palms Housing Estate (Leo Courts) – Butabika, Kampala



Scope of Work:

- Aluminum Windows & Doors
- Curtain Wall

Completion Year: 2017

SOME OF THE COMPLETED COMMERCIAL PROJECTS

Proposed Office Building – Plot 38, Kira Road



Scope of Work:

- Aluminium Windows & Doors
- Curtain Wall.

Completion Year: 2017

Royal Palms Housing Estate (Taurus Courts) – Butabika, Kampala



Scope of Work:

- Aluminum Windows & Doors
- Curtain Wall

Completion Year: 2012

SOME OF THE COMPLETED COMMERCIAL PROJECTS

Proposed Residence – Ntinda, Kampala



Scope of Work:

- Aluminium Windows & Doors
- Curtain Wall.

Completion Year: 2016

Proposed Residential Apartments – Baker Road, Kampala.



Scope of Work:

- Aluminum Windows & Doors
- Curtain Wall
- ACP Cladding
- Frameless Glass
- Railing

Completion Year: 2016